

**MARLIN
DIGITAL
IMAGING
INC.**

DISPLAY BUYERS GUIDE

EDITION 2

SIGNS

EXHIBITS

DISPLAYS



BANNER STANDS



EXHIBITION SYSTEMS



OUTDOOR DISPLAYS



INFORMATION &
POSTER DISPLAYS

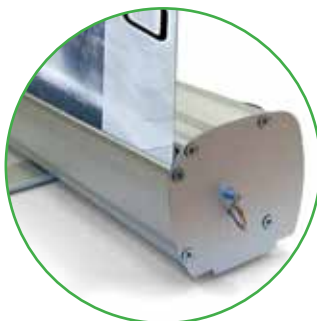


SIGNAGE

LONDON



- Economy retractable banner stand
- Includes carry bag



Part #	Description	W	H
FE3178SSH	London – 31½", with hook/tape top bar	31½"	78"
FE3178SS	London – 31½", with clamp top bar	31½"	78"
FE3378SSH	London – 33½", with hook/tape top bar	33½"	78"
FE3378SS	London – 33½", with clamp top bar	33½"	78"
FE3178SSB	London, black finish – 31½"	31½"	78"
FE3378SSB	London, black finish – 33½"	33½"	78"
FE3000-RSL	London – spot light for banner stand		
FE3178SS-PCB	London – padded carry bag – 31½"		
FE3378SS-PCB	London – padded carry bag – 33½"		

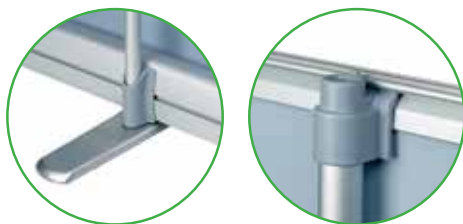
ROME



- Quality economy retractable banner stand
- Clamp top bar
- Includes padded carry bag

Part #	Description	W	H
FRP3378SS	Rome – 33½"	33½"	78"

- Mid-range retractable banner stand
- Clamp top bar
- Includes padded carry bag



Part #	Description	W	H
FRG3378SS	Paris – 33½"	33½"	80"

- Premium retractable banner stand
- Chrome end caps
- Clamp top bar
- Adjustable feet underneath base
- Includes padded carry bag
- No protruding feet



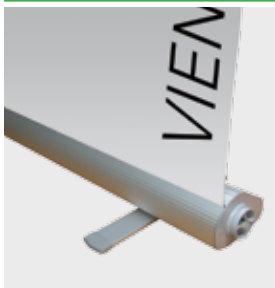
Part #	Description	W	H
FN2300SS	Geneva – 23¾"	23¾"	80"
FN3100SS	Geneva – 31½"	31½"	80"
FN3300SS	Geneva – 33½"	33½"	80"
FN3900SS	Geneva – 39¾"	39¾"	80"
FN4700SS	Geneva – 47¼"	47¼"	80"
FN5900SS	Geneva – 59"	59"	80"

- Premium vinyl specifically developed for Roll-Up banner applications.
- Anti-scratch finish and no lamination required
- Block-out grey back for total opacity
- Polyester base to ensure lay-flat properties
- Suitable for use with solvent, eco-solvent, and UV inks

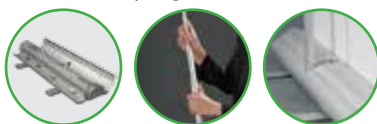


Part #	Description	W	L
FMF3650GB	Premium banner media	36"	164 ft
FMF4250GB	Premium banner media	42"	164 ft
FMF5450GB	Premium banner media	54"	164 ft

VIENNA



- High performance retractable banner stand
- Clamp top bar
- Clamp bottom bar on cylinder in base – no tape required
- Telescopic pole for a variety of banner heights
- Includes hard shell carry bag



Part #	Description	W	H
FN3178SS	Vienna	31½"	40-90"

MADRID



- Interchangeable cassette retractable banner stand
- Chrome end caps
- Clamp top bar
- Clamp bottom bar on cylinder in base – no tape required
- Includes carry bag
- No protruding feet



Part #	Description	W	H
FMD3378SS	Madrid	33½"	79"
FMDCASS	Madrid extra cassette	33½"	

DUBLIN



- Double-sided economy retractable banner stand
- Clamp top bar
- Includes carry bag



Part #	Description	W	H
FDRL3378DS	Dublin	33½"	79"

BARCELONA



- Double-sided retractable banner stand
- Suitable for indoor and outdoor use
- Plastic base can be filled with sand or water for stability
- Twist-out foot for extra support
- Wheeled base for easy transportation
- Includes carry bag



Part #	Description	W	H
FXD3178DS	Barcelona	31½"	79"

- Adjustable banner stand for large graphic backdrops
- Can be used as a single or double sided unit
- Telescopic poles for different heights and widths
- Hang vinyl banners by using plastic ties with grommets on the banner, or pole pockets on the banner
- Includes carry bag



BERLIN



Part #	Description	W	H
FKS88DS	Berlin	37"-94"	44"-94"

- Lightweight aluminum construction
- Quick assembly time
- Top and bottom clamps for easy graphic changes
- Includes carry bag

OSLO



Part #	Description	W	H
FR3178SS	Oslo	31½"	79"
FR3178DS	Oslo Double	31½"	79"



PORTO



- Quick assembly time
- Graphic mounted using grommets
- Rubber, non-slip feet
- Includes carry bag



Part #	Description	W	H
FXB2363F-N	Porto	24"	63"

VENICE



- Suitable for indoor and outdoor use
- Quick assembly time
- Plastic base can be filled with water or sand for stability
- Single and double sided models available
- Graphic mounted using grommets
- Includes carry bag



Part #	Description	W	H
FEV3178SS	Venice	31½"	71"–79"
FEV3178DS	Venice Double	31½"	71"–79"

SYDNEY

- Strong and lightweight aluminum pop-up frame designed for quick assembly
- Magnetic frame bars mount easily onto the frame
- Round magnets on header strips allow for precise graphic panel adjustment
- ½" magnetic adhesive strips included for mounting on the graphic
- Heavy duty wheeled case included – can be graphic-wrapped for additional visual impact
- Two halogen lights included
- Lid of case can be locked for secure storage



Part #	Description	W	H
FEMPU33SWHC	Sydney – 3×3 – Curve	8'	8'
FEMPU34SWHC	Sydney – 3×4 – Curve	10'	8'
FEMPU38SWHC	Sydney – 3×8 – Double Curve	20'	8'

- Strong and lightweight aluminum frame designed for quick assembly
- Velcro strips come pre-mounted on the frame
- Roll of Velcro tape included to sew onto the fabric graphic
- Two halogen lights included
- Wheeled case included – for easy transportation



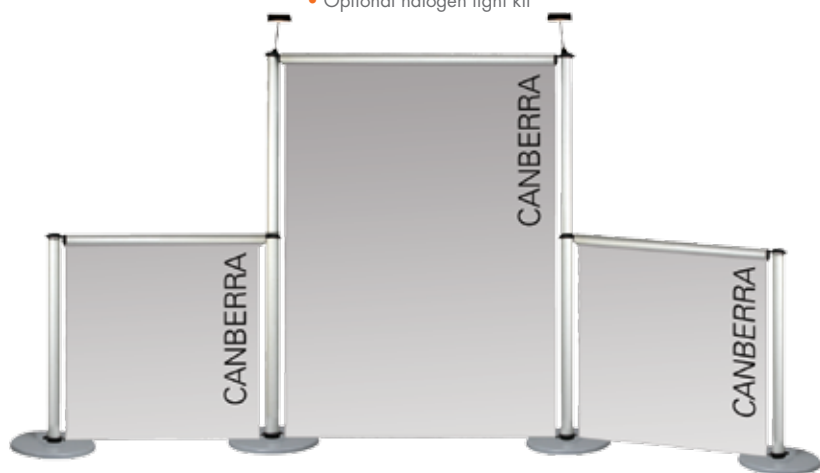
MELBOURNE



Part #	Description	W	H
FTFPU33S	Melbourne – 3×3 – Straight	8'	8'

CANBERRA

- Versatile modular system – can be expanded easily
- Lightweight and strong aluminum construction
- Adjustable height from 40"– 80"
- Includes carry bag
- Optional halogen light kit



Part #	Description	W	H
FC4080VPS	Canberra Vertical Pole		40"-80"
FCBASE	Canberra Base		
FC40HPS	Canberra Horizontal Pole – 40"	40"	
FC60HPS	Canberra Horizontal Pole – 60"	60"	

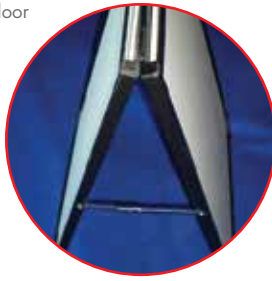
BRISBANE

- Counter unit flat-packs for easy transportation
- Quick, no-tools installation
- Includes header and pole kit
- Cable port for safe use with electrical items
- Includes carry bag



Part #	Description	W	H
FBCCUH	Brisbane	35¼"	70¾"

- Suitable for indoor and outdoor use
- Can be used single or double sided
- Sturdy steel construction with black powder-coated finish
- Accepts sign inserts up to 6mm thick
- Folds flat for easy transportation



NEW YORK



Part #	Description	W	H
FAF2436B	New York	24"	36"

- Suitable for indoor and outdoor use
- Can be used single or double sided
- Convenient front-loading snap frames
- Protective graphic covers
- Folds flat for easy transportation



BOSTON



Part #	Description	W	H
FG2436S	Boston	24"	36"

- Suitable for indoor and outdoor use
- Can be used single or double sided
- Convenient front-loading snap frames
- Plastic base can be filled with water or sand for stability
- Protective graphic covers
- Handle and wheels on base for easy transportation



SEATTLE



Part #	Description	W	H
FCL2436S	Seattle	24"	36"

PHILADELPHIA



- Can be used single or double-sided
- Suitable for indoor or outdoor use
- Plastic base can be filled with water or sand for stability
- Accepts graphics up to 10mm thick
- Graphics can also be mounted landscape
- Wide graphics can be displayed by using multiple Philadelphia bases at intervals
- Carry handles for easy transportation
- When used indoors, taller graphics can be used



Part #	Description	W	H
FRTPBX	Philadelphia Base	Portrait: 14" – 36"	Portrait: 24" – 48"

LOS ANGELES



- Suitable for indoor or outdoor use
- Accepts die cut inserts such as PVC or aluminum
- Special-grade aluminum panel available (see picture) which combines maximum strength with great flexibility in the wind
- Special-grade aluminum panel comes with rounded corners for safety and a white powdercoated finish to print on
- When used indoors, taller graphics can be used
- Easy "no tools" assembly – single nylon fitting locks panel to base
- Carry handle on the base
- Recycled PVC base – stable and strong
- Weighted and contoured base provides great stability without the need of filling with water or sand
- Can be used single or double-sided

Part #	Description	W	H
FLAFB	Los Angeles Base	20"	3½"
FLAAPWSG	Los Angeles special-grade panel	18"	33½"

MEMPHIS



- Large outdoor banner frame can be used single or double sided
- Lightweight and strong aluminum construction
- Easy push-fit assembly, no tools required
- Ground pegs supplied
- Includes carry bags



Part #	Description	W	H
FARHB33S	Memphis	92½"	33½"

- Popular 'teardrop' shape
- Comes with spike for mounting in soft ground and cross base with water bag for mounting on hard ground
- Includes carry bag



CHICAGO



Part #	Description	W	H
FTF10S	Chicago – approx. 11' high	42"	96½"

- Extra large flag display
- Comes with spike for mounting in soft ground and cross base with water bag for mounting on hard ground
- Includes carry bag



DETROIT



Part #	Description	W	H
FWB15S	Detroit – approx. 17' high	33½"	177"

- Large portable flag pole
- Telescopic aluminum pole for quick assembly
- Base can be filled with water or sand for stability
- Includes carry bags



DENVER



Part #	Description	W	H
FWBF15S	Denver – approx. 17' high	43"	up to 157"

TORONTO



- Aluminum snap frame
- Includes wall fixings and protective graphic cover

Part #	Description	W	H
FL8511S	Toronto, silver snap frame	8½"	11"
FL8511B	Toronto, black snap frame	8½"	11"
FL1117S	Toronto, silver snap frame	11"	17"
FL1117B	Toronto, black snap frame	11"	17"
FL1824S	Toronto, silver snap frame	18"	24"
FL1824B	Toronto, black snap frame	18"	24"
FL2228S	Toronto, silver snap frame	22"	28"
FL2228B	Toronto, black snap frame	22"	28"
FL2436S	Toronto, silver snap frame	24"	36"
FL2436B	Toronto, black snap frame	24"	36"
FL3648S	Toronto, silver snap frame	36"	48"
FL3648B	Toronto, black snap frame	36"	48"

MONTREAL



- Aluminum poster clamp
- Suitable for wall-mounting or ceiling suspension
- Clamps securely on the top and bottom of the graphic



Part #	Description	W	H
FPC11S	Montreal - 11"	11"	
FPC22S	Montreal - 22"	22"	
FPC36S	Montreal - 36"	36"	
FPC48S	Montreal - 48"	48"	

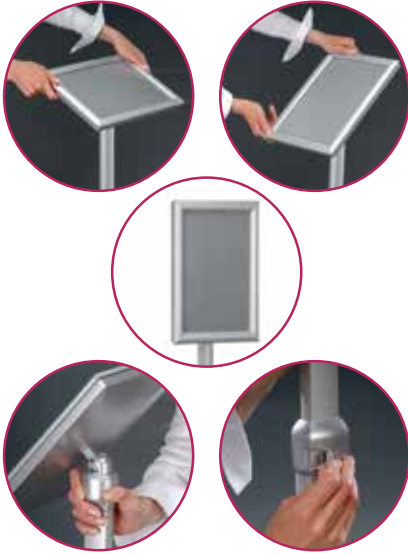
VANCOUVER



- Aluminum snap frame for easy front loading
- Back lit LED illumination saves up to 60% in energy costs over fluorescent technology
- Includes built-in on/off switch and only requires access to a regular electrical outlet
- Slim design – only ¾" thick
- Comes with wall fixings and protective graphic cover

Part #	Description	W	H
FM1117SS	Vancouver LED – 11" × 17"	11"	17"
FM2228SS	Vancouver LED – 22" × 28"	22"	28"
FM2436SS	Vancouver LED – 24" × 36"	24"	36"

- Single sided poster stand can be used in portrait or landscape format
- Snap frame profiles
- Protective graphic cover
- Adjustable height
- Adjustable angle of frame



Part #	Description	W	H
FJ1117S	Winnipeg, portrait/landscape	11"	17"

WINNIPEG



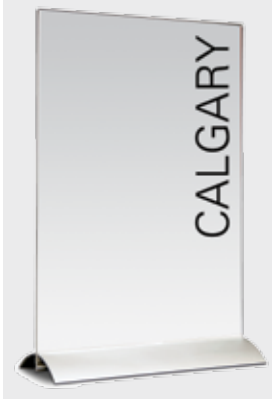
- Lightweight and strong aluminum base
- Accepts rigid graphics such as foamboard, coroplast, acrylic, and aluminum composite from 6mm – 28mm thick
- Attractive silver finish
- Quick set-up – no need to pre-drill the graphic
- Base width is 20"
- Multiple bases can be used for larger graphics

Part #	Description	W	H
FPYR20S	Saskatoon Base	20"-36"	24"-60"

SASKATOON



CALGARY



- Simple and effective way to display a printed sheet of paper on the countertop or tabletop
- Aluminum spring-action base holds the clear acrylic pocket



Part #	Description	W	H
FSW8511S	Calgary	8½"	11"

REGINA

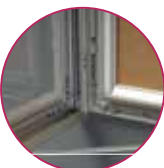


- Small desktop retractable banner stand
- Lightweight aluminum construction
- Adhesive top bar



Part #	Description	W	H
FEM1117TT	Regina	11¾"	16½"

KELOWNA

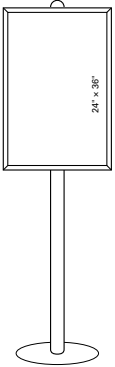


- Weather-proof cork or magnetic/dry-wipe showboard for indoor/outdoor use
- Locking door with concealed hinges
- Cork showboard comes with pins for graphic mounting
- Magnetic/dry-wipe showboard comes with magnets for graphic mounting
- Comes with wall-mounting hardware
- Use in portrait or landscape positions

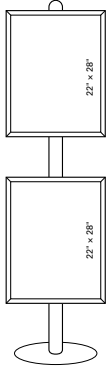
Part #	Description	External Size		Graphic Area	
		W	H	W	H
FV3242SC	Kelowna - cork	32.1"	42.3"	28.1"	38.3"
FV3242SM	Kelowna - magnetic	32.1"	42.3"	28.1"	38.3"

- 2-channel main pole
- Heavy duty base for stability
- Create your custom display by adding poster frames that you need

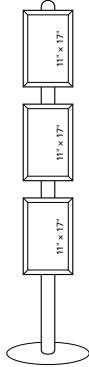
Up to 2 frames
(mounted
back-to-back)



Up to 4 frames
(mounted
back-to-back)



Up to 6 frames
(mounted
back-to-back)



Part #	Description	W	H
FFPBS	Pole and base	18"	76"
FFPB1117S	Pole-mounted snap frame	11"	17"
FFPB2228S	Pole-mounted snap frame	22"	28"
FFPB2436S	Pole-mounted snap frame	24"	36"

OTTAWA INFO STAND



- 2-channel main pole with 2 snap frames and 2 leaflet dispensers
- Heavy duty base for stability
- Poster size is 22" x 28"
- Each leaflet dispenser holds 8½" x 11" leaflets side by side



OTTAWA POSTER & LEAFLET



Part #	Description	W	H
FFPL2228S	Ottawa – poster and leaflet		76"
FFHDR	Optional header unit	18"	6"

OTTAWA

POSTER & SHELF



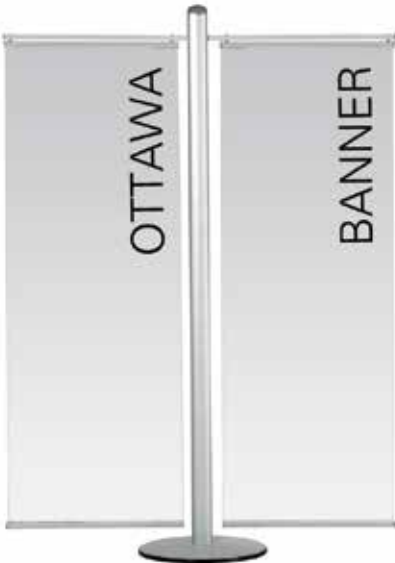
- 2-channel main pole to which poster frames and shelves are fixed
- Poster size is 18" x 24"
- Heavy duty base for stability
- Acrylic header unit can display a self-adhesive graphic (not shown)



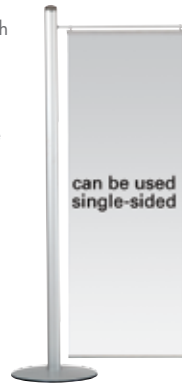
Part #	Description	W	H
FFPS1824S	Ottawa – poster and shelf		76"
FFHDR	Optional header unit	18"	6"

OTTAWA

BANNER



- 2-channel main pole with banner holders
- Heavy duty base for stability
- Banners are 23½" wide and display banners up to 68" high
- Acrylic header unit can display a self-adhesive graphic (not-shown)



Part #	Description	W	H
FFBL60S	Ottawa – banner		76"
FFHDR	Optional header unit	18"	6"

- 2-channel main pole with 8½" × 11" leaflet dispensers
- Heavy duty base for stability
- Acrylic header unit can display a self-adhesive graphic (as shown)



OTTAWA

LEAFLET DISPLAY WITH SIDE SHELVES



Part #	Description	W	H
FF8511S	Ottawa – leaflet display with side shelves		76"
FFHDR	Optional header unit	18"	6"

Fully-Adjustable heavy-duty monitor stand

- Accepts up to 50" screens
- Removable shelf
- Screen mount and shelf are height adjustable
- Cable conceals in post
- 76" overall height
- Heavy duty – extremely stable
- Locking wheels – can be easily moved from room to room
- Black finish



DALLAS



iPad Stand

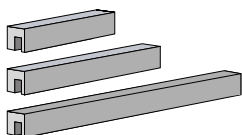
- Works in both landscape & portrait positions



COLUMBUS



IDENTITÉ SIGNAGE



FSC7402FC

FSC7404WW



Standoffs

- Enhance appearance – hold signs away from the wall

Part #	Description	Diameter	Length
FL1600H	Flush Cap – 5/8" diameter. Designed to be used with a screw to mount a panel flat on the wall.		
FL1220H	Standoff	1/2"	3/4"
FL1625H	Standoff	5/8"	1"
FL2525H	Standoff	1"	1"

BlockIT

- Contemporary and clean – holds signs away from wall

Part #	Description	Length
FL25120BL	BlockIT	4 3/4"
FL25180BL	BlockIT	7"
FL25260BL	BlockIT	10 1/4"



Cable Display

- 1.5mm cables for an almost invisible display

Mounting Kits

Part #	Description
FCS7402FC	Floor to Ceiling
FCS7404WW	Wall to Wall

Edge Grips

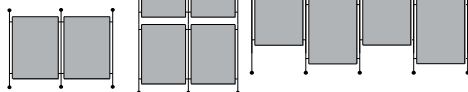
Part #	Description	For Panels Thickness
FCS72125S	Single fitting	up to 1/8"
FCS72125D	Double fitting	up to 1/8"
FCS72250S	Single fitting	up to 1/4"
FCS72250D	Double fitting	up to 1/4"
FCS72500S	Single fitting	up to 1/2"



Complete Display Kit

Part #	Graphic Size	Includes
FCS8511	8 1/2" x 11"	Wall to Wall Mounting Kit, Edge Grips, and Acrylic Poster Pocket
FCS1117	11" x 17"	
FCS1624	16" x 24"	
FCS2228	22" x 28"	

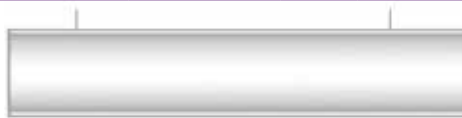
Custom displays available



Curved Signs

- Use for way-finding, directories, notices, pictures, etc.
- Each sign comes with a clear graphic cover and a key ring suction cup to remove the cover
- Ceiling hung signs are complete with cales and ceiling fittings

Type	Part #	W	H
Wall Signs	D4L6GP	4"	6"
	D6L6GP	6"	6"
	D85L275GP	8.5"	2.75"
	D85L55GP	8.5"	5.5"
	D85L11GP	8.5"	11"
Wall Bracket Signs	B6L6SA	6"	6"
	B85L85SA	8.5"	8.5"
	B85L11SA	8.5"	11"
Ceiling Hung Signs	C6W40SA	40"	6"
	C26B475W40SA	40"	4.75" bottom



C6W40SA



IDENTITÉ SIGNAGE



D4L6GP



D85L275GP



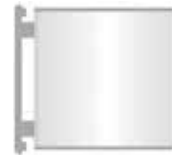
D85L55GP



D85L11GP



B6L6SA



B85L85SA



B85L11SA

Note: For outdoor displays with hollow plastic bases, use additives or sand when using in temperatures below 0°C (32°F).

FLEXIKROME™ operates a policy of continuous improvement and reserves the right to alter products and specifications to reflect this without prior notice. Any information given either verbally or in writing is approximate only and given in good faith and does not constitute terms or part of any contract. FLEXIKROME™ does not accept liability for variance including direct, indirect, or consequential loss. The customer is deemed to have determined the suitability of the product for the use intended and assumes all associated risks and liabilities in connection with specifying, using or being unable to use any of the products. This catalogue supersedes all previous issues with immediate effect. E & OE.

SIGNAGE

INFORMATION &
POSTER DISPLAYS

OUTDOOR DISPLAYS

EXHIBITION SYSTEMS

BANNER STANDS

 FLEXIKROME™